



Rain tightness test equipment for IPX

serie IPX1-2



The innovation as an attitude

The company

Ineltec is a company with more than 30 years of experience in the sector and 10.000 equipment installed all around the world. Our achievements are due to the ability of offering tailored solutions to perform any kind of test.

“Technology, research and innovation are the basis for creating equipment of high reliability.”



Model

Rain tightness test equipment
for IPX1-IPX2



Rain tightness test equipment for IPX1-IPX2 made by Ineltec
to carry out tests according to the international standards.

Model

Rain tightness test equipment for IPX
Serie IPX1-2 / INELTEC

Equipment description

The IPX1 and IPX2 dripping test equipment is designed to meet the requirements of IEC 60529 standard.

The drip flow rate is joint and monitored by a touch screen controller that sets the pressure water for the drip box. The IPX1 and IPX2 drip test equipment and water system is completely enclosed and filtered to minimize clogging of any nozzles.

Volumes

01 500

02 1000

01



Sectors



Aeronautical,
Automotive,
Railway



Luminary,
Watertight parts



R+D,
Technological
centers,
Universities,
Laboratories



Electronic
Telecommu-
nications,
Mechanical
constructions,



Defense,
Armament

Standards

IEC 60529

UNE 20324

Protección IPX1 **Opcional*

DIN 40050-9

Protección IPX3

Protección IPX2 **Opcional*

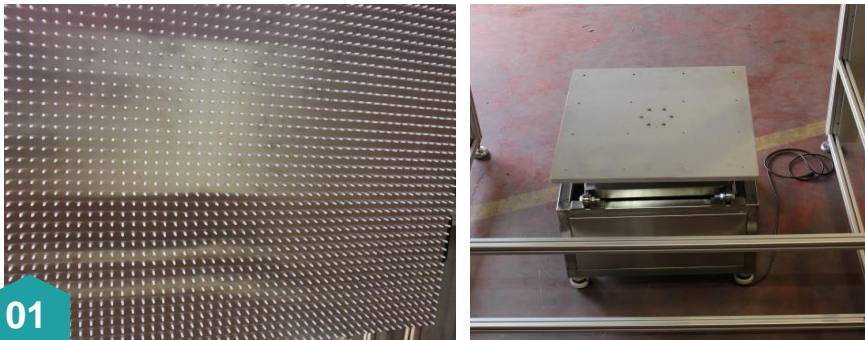
CEI 60529

Protección IPX4

Etc.

Equipments characteristics

construction



01

01/ interior/exterior

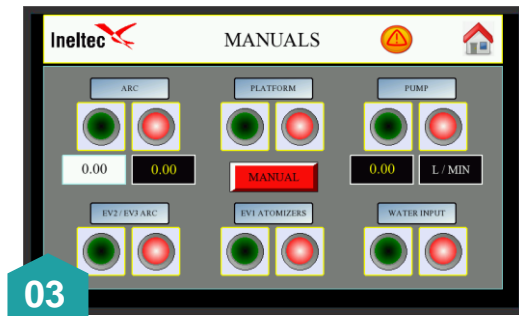
Está construido en acero inoxidable y el exterior en chapa de aluminio lacada en color blanco.



02

04/ movilidad

La máquina dispone de 4 ruedas multidireccionales con dispositivo de freno.



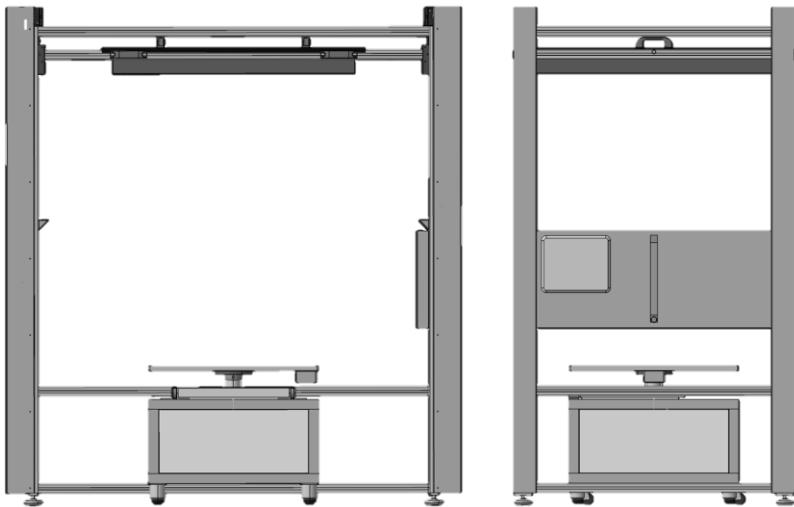
03

05/ sistema de control

El equipo se controla mediante una pantalla táctil ubicada en el exterior de la cámara.

Características equipos

Plano frontal / lateral



Consumo y medidas

Model IPX1-2	Dimensions AxAxP (mm) *approx.
IPX1-2/500	500X500
IPX1-2/1000	1000x1000

*Opcionalmente se puede controlar la temperatura de la cámara o del agua.

Control system

*Programmer/
Touch screen*

Characteristics programmer

- 1/ Angle of rotation of the rain bow
- 2/ Arc speed
- 3/ Arc oscillation time
- 4/ Height and speed of rotation of the plate
- 5/ Adjust water flow rate and maximum pressure
- 6/ Rain time and pause
- 7/ N° of cycles
- 8/ Programmable digital counter rain cycles
- 9/ Generator cycle testing programs

Touch screen programmer



International Presence



Range of products

Tightness to the rain chamber
CELL Series / INELTEC

ES Simulation equipment



Range of products

Tightness to the rain chamber
CELL Series / INELTEC

BE Testing bench



Fatigue endurance



Characterization



Pulsing pressure



Rupture



Bursting



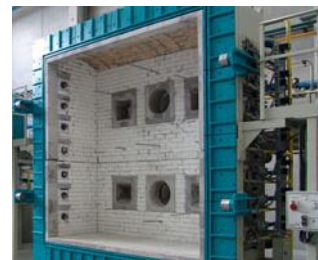
Liquid Thermal Shock



Standardization



Resistance to the fire - I



Resistance to the fire - II



Reaction to the fire - I



Reaction to the fire - II

MC Measurement and control



Artificial vision - I



Artificial vision - II



Artificial vision - III



End of line control - I



End of line control - II



Ineltec
Spain / Barcelona
Headquarters



C/ Metal·lúrgia, 8
Pol. Ind. Les Goules
08551 Tona



T/ 0034 938 605 100
F/ 0034 938 717 463



ineltec@ineltec.es
www.ineltec.es

Follow us
on our
social networks



[twitter](#)



[Blog](#)